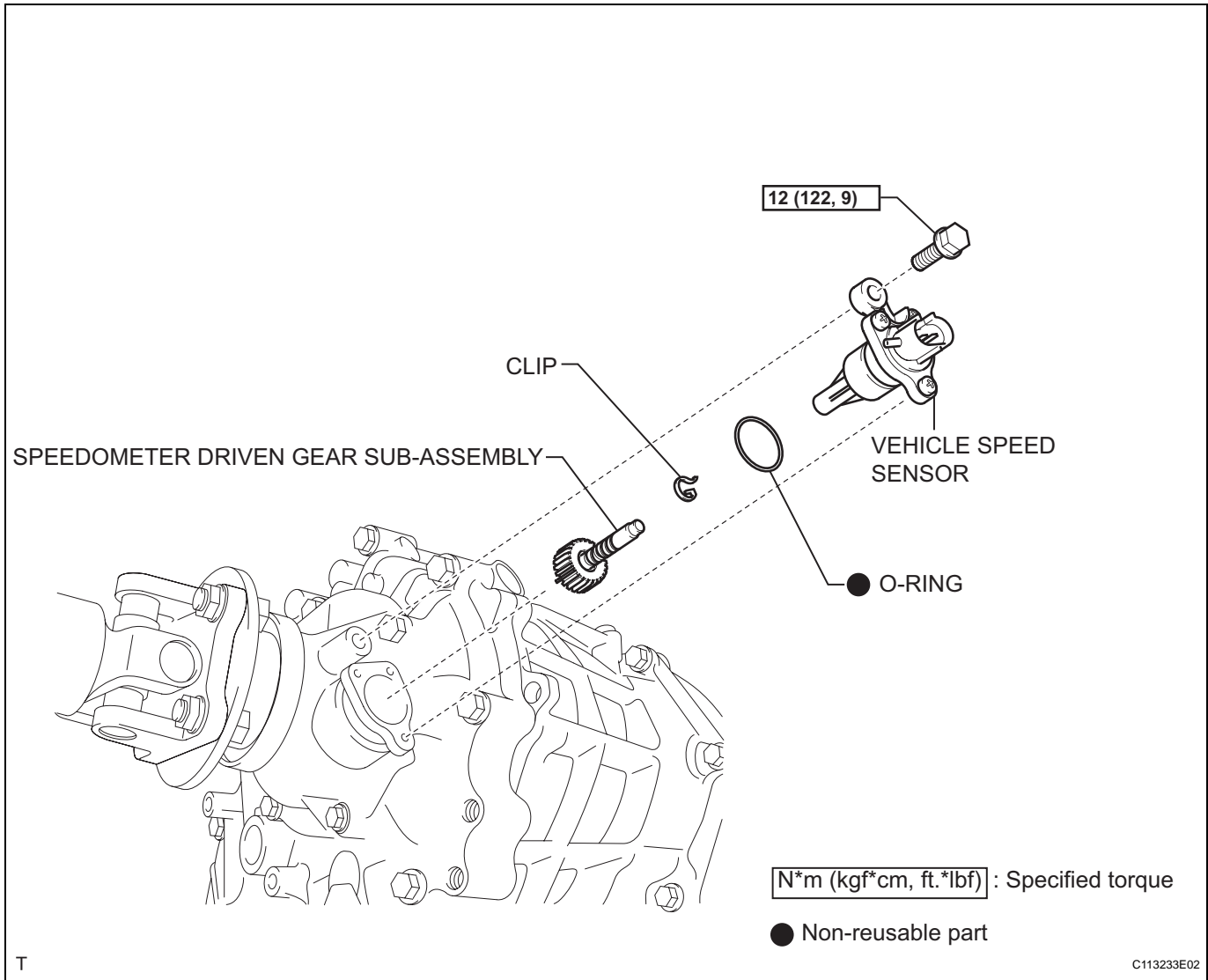


# SPEEDOMETER DRIVEN GEAR

## COMPONENTS



## REMOVAL

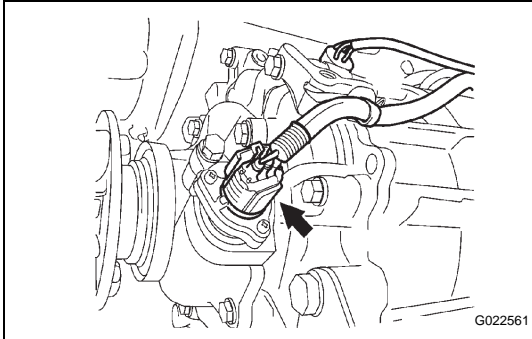
1. **DISCONNECT CABLE FROM NEGATIVE BATTERY TERMINAL**

### CAUTION:

Wait at least 90 seconds after disconnecting the cable from the negative (-) battery terminal to prevent airbag and seat belt pretensioner activation.

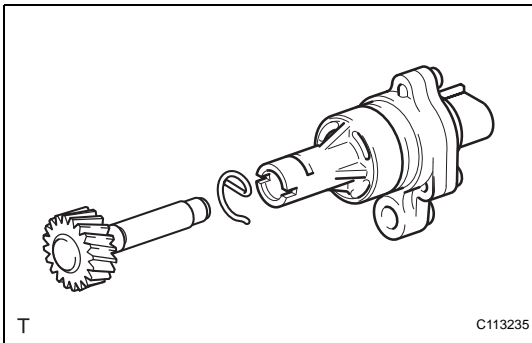
2. **REMOVE VEHICLE SPEED SENSOR WITH SPEEDOMETER DRIVEN GEAR SUB-ASSEMBLY**

- (a) Disconnect the sensor connector.
- (b) Remove the bolt and sensor with driven gear.

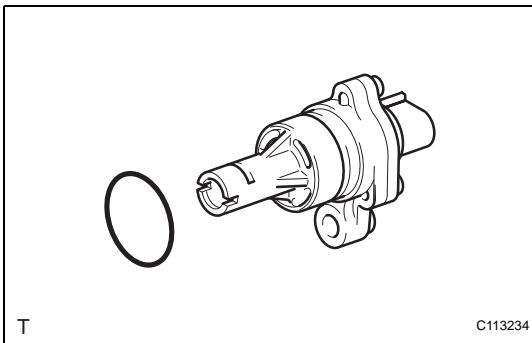


3. **REMOVE SPEEDOMETER DRIVEN GEAR SUB-ASSEMBLY**

- (a) Remove the clip and driven gear from the sensor.



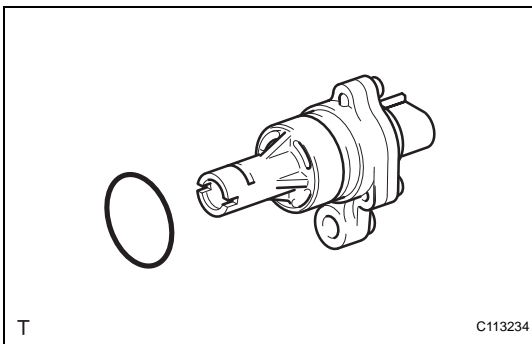
- (b) Remove the O-ring from the driven gear.

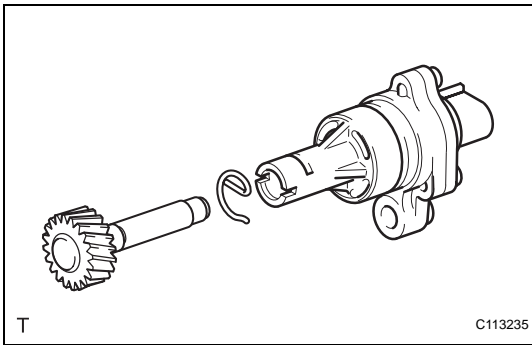


## INSTALLATION

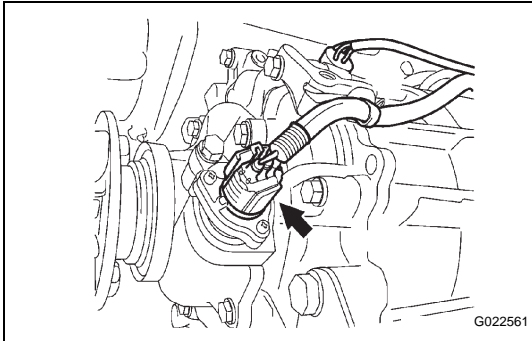
1. **INSTALL SPEEDOMETER DRIVEN GEAR SUB-ASSEMBLY**

- (a) Install a new O-ring onto the driven gear.





(b) Install the driven gear onto the sensor with the clip.



**2. INSTALL VEHICLE SPEED SENSOR WITH SPEEDOMETER DRIVEN GEAR SUB-ASSEMBLY**

(a) Install the sensor with driven gear with the bolt.

**Torque: 12 N\*m (122 kgf\*cm, 9 ft.\*lbf)**

(b) Connect the sensor connector.

**3. CONNECT CABLE TO NEGATIVE BATTERY TERMINAL**

**Torque: 3.9 N\*m (40 kgf\*cm, 35 in.\*lbf)**